

Supercade Manitas and Manitas Cable Car Terminal:  
**Administrative center and transport hub in one**



pic\_01: The new administration building of Ciudad Bolívar accommodates all essential offices and authorities as well as numerous offices of municipal and social service providers under a common roof. The combination with the cable car terminal results in a previously unknown closeness to the citizen. Largely glazed façades underline the public character of the ensemble. The architects chose steel profile systems from Jansen to implement the various steel and glass structures due to their reliable functionality and durability.

Client: Comunidad de Bolívar, Bogotá  
Architects: ARE Arquitectura en Estudio, Bogotá  
Photos: Jairo Llano – LlanoFotografía, Bogotá | © Jansen AG, CH-Oberriet  
Project report: Anne Marie Ring, BAUtext Media Services, DE-Munich

## Supercade Manitas and Manitas Cable Car Terminal: Administrative center and transport hub in one



pic\_02: The connection of administration building and cable car terminal presents itself as a mighty solitaire as firm as a rock made of concrete, steel and glass, which stands out from the colourful sea of houses, visible from afar.



pic\_03: The two buildings are completely independent, although they flow easily from one structure to the other. The principal access is very pedestrian friendly, even for people with disabilities or reduced mobility.



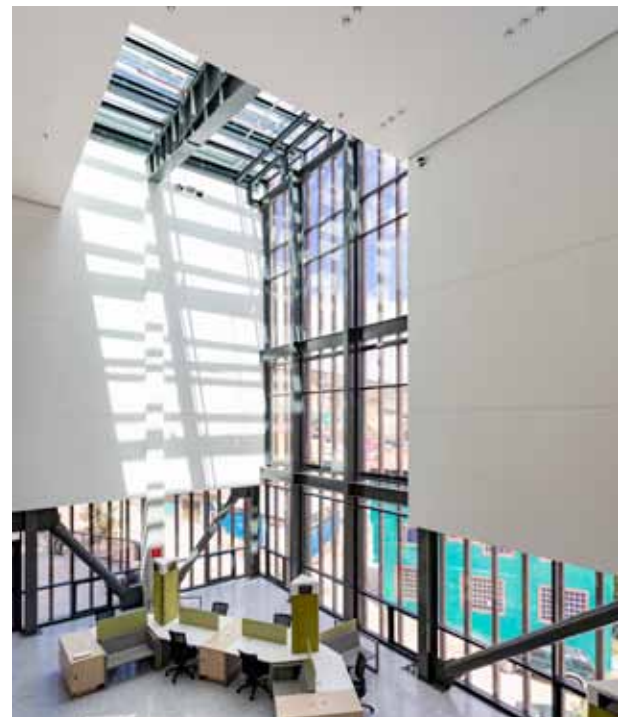
pic\_04: Ground floor: Façade in Economy 50 steel system (doors and fixed glazing); doors with panic evacuation systems. Above: VISS Basic curtain wall (with inlaid windows of Economy 50). The steel structure supports the sunshade system made from concrete slats.



pic\_05: The grid of the external sun protection determined the size of the glass elements, which are usually 1.20 m x 2.40 m.  
pic\_07: The versatile modular system from Jansen VISS also enabled the seamless transition from the façade to the roof glazing.



pic\_06: The determining factors for choosing Jansen Steel Systems were the reliable functionality and durability which they offer in highly frequented public buildings as Supercade Manitas.



Client: Comunidad de Bolívar, Bogotá  
Architects: ARE Arquitectura en Estudio, Bogotá  
Photos: Jairo Llano – LlanoFotografia, Bogotá  
© Jansen AG, CH-Oberriet  
Project report: Anne Marie Ring, DE-Munich

## Supercade Manitas and Manitas Cable Car Terminal: **Administrative center and transport hub in one**

*The new administration building of the City of Bogotá in the town of Ciudad Bolívar houses all the essential offices and authorities under just one roof; there are also numerous offices of municipal and social service suppliers. The connection to the cable car terminal results in a citizen-focused approach for all types of services. Largely glazed façades underline the public character of the ensemble. The architects chose Jansen's steel profile systems due to their functionality and durability to implement the various constructions.*

During the last few decades Bogotá, capital and largest city of Colombia, has developed into a bustling metropolis with more than eight million inhabitants. The gap between rich and poor is large, with the differences not only showing in the income but also in the lack of infrastructure in many residential areas on the sprawling periphery of the constantly growing metropolis. The poorer population groups in particular are forced to settle here; without access to public facilities such as schools, hospitals or public transportation. One of these districts, the Ciudad Bolívar in the south-west of Bogotá, has been benefiting from an urban development program that aims to improve their situation – among others by expanding public transport as well as bringing administration and public services closer to the citizen.

### **Cable car as a means of transport**

Because the topography and the dense, unstructured development on the foothills of the Andes forbade the expansion of conventional modes of transport such as buses and trains, those responsible decided on another means of transport: the cable car. The Austrian company Doppelmayr Seilbahnen GmbH built an approx. 3.3 km long cable car route with 160 gondolas of which each can accommodate ten people. The trip with the TransMiCable shortens the transfer from the Mirador El Paraíso mountain station to the El Tunal valley station from about one and a half hours to fifteen minutes. Its four stations were set up at the Ciudad Bolívar's traffic hubs. This means that the new cable car offers the more than 700,000 inhabitants of this urban district a connection to the TransMilenio rapid transit bus network, the main feeder to the center of Bogotá.

### **Citizen-focused approach to public services**

The cable car project was accompanied by a broad-based urban development program that included the construction of a new administration building, thus bringing public services closer to the citizen. ARE Arquitectura En Estudio, Bogotá, won the competition from among 70 entrants. The architects designed the roof of the new building as a publicly accessible area that not only offers a beautiful view but also various play grounds. The combination of cable car terminal and the administration building presents itself as a mighty solitaire as firm as a rock made of concrete, steel and glass, which can be seen from afar. From a structural point of view, however, there are two separate structures.

Inside Supercade Manitas, countless administrative matters related to basic public services can be settled in just one building – ranging from drinking water supply, sewerage and electrical networks through institutional departments like those for Social Prosperity, Recreation and Sports and numerous District Secretaries such as Education Secretary, Environment Secretary, Social Integration Secretary, Women's Secretary, Health Secretary, Mobility Secretary as well as a special administrative unit of the fire brigade and migration

## Supercade Manitas and Manitas Cable Car Terminal: **Administrative center and transport hub in one**

service are located right here – thus allowing people to solve a broad range of issues without leaving the area. But not only functionally Supercade Manitas is outstanding: By entering the building all the poverty and meanness from the outside are left behind – from one moment to another you may feel safe and secure. Through the glass façades you may even, as if standing on a cliff, calmly contemplate the picturesque housing areas covering the slopes of Mount Monserrate.

### **Glass doors and façades signal a warm welcome**

A mullion and transom façade made of Jansen VISS Basic contributes to the bright, inviting ambience of Supercade Manitas. The grid of the external sun protection determined the size of the glass elements, which are usually 1.20 m wide x 2.4 m high. The versatile modular system from Jansen VISS also allowed a seamless transition from the façade to the roof glazing. The transparency of the outer shell continues inside the building with numerous fixed glazings, glass doors and windows made from the non-insulated Jansen Economy 50 steel system. The architects chose Jansen's steel systems because they provide exactly the robustness and long-term functionality that highly frequented buildings like traffic terminals or administration centers require.

The large-scale glazing also unmistakably signals the transparency and openness that the authorities want to demonstrate towards its citizens. Even if not yet everyone may be able to afford a trip with the TransMiCable, the Supercade Manitas has created an inviting public space where everyone is able to enjoy the convenience of the 21st century with its reliable network and communication services. Right inside the building, future is no longer a promise but reality. Knowing that makes people feel confident, especially young people. Thus the new cable car is not only intended to bridge terrain that is topographically difficult to access, but also to bridge the gap between rich and poor: By connecting the poorer areas to the center of Bogotá there is hope that people find their way to schooling, training and income opportunities in the center of the metropolis.

### **BAUTAFEL**

**Client:** Comunidad de Bolívar

**Architects:** ARE Arquitectura en Estudio,  
Bogotá

### **Metal constructions:**

CYQ Group Ltda, Bogotá

### **Verwendete Profilsysteme:**

Jansen VISS Basic, Economy 50

**Supplier:** PerfilArq Colombia SAS, Bogotá

**Photos:** Jairo Llano – LlanoFotografia, Bogotá

**Copyright:** Jansen AG, CH-Oberriet

Photos may be used free of charge in connection with this editorial report.

### **Kontakt für die Redaktionen**

BAUtext Mediendienst München

Anne Marie Ring

DE-81925 München

Tel.: +49 (0)89 21 11 12 06

Mail: a.ring@bautext.de

www.bautext.de

Jansen AG

Anita Lösch

CH-9463 Oberriet SG

Tel.: +41 (0)71 763 99 31

Mail: anita.loesch@jansen.com

www.jansen.com