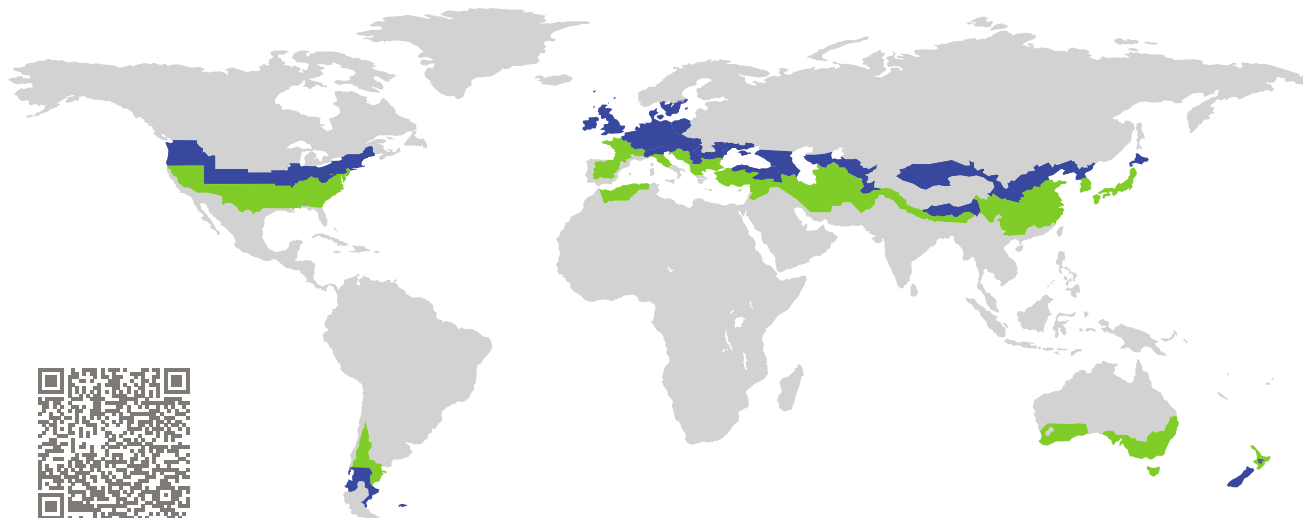


CERTIFICATE

Certified Passive House Component

Component-ID 1579ic03 valid until 31st December 2025

Passive House Institute
Dr. Wolfgang Feist
64283 Darmstadt
Germany

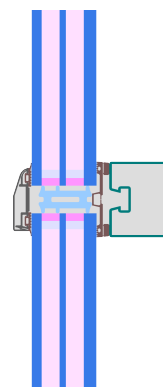


Category: **Glass roof**
Manufacturer: **Jansen AG,
Oberriet SG,
Switzerland**
Product name: **VISS HI (60 mm)**

**This certificate was awarded based on the following
criteria for the cool, temperate climate zone**

Comfort $U_{CW,i} = 0.93 \leq 1.00 \text{ W}/(\text{m}^2 \text{ K})$
 $U_{CW,i,\text{installed}} \leq 1.00 \text{ W}/(\text{m}^2 \text{ K})$
with $U_g = 0.80 \text{ W}/(\text{m}^2 \text{ K})$

Hygiene $f_{Rsi=0.25} \geq 0.70$



Passive House
efficiency class

phE

phD

phC

phB

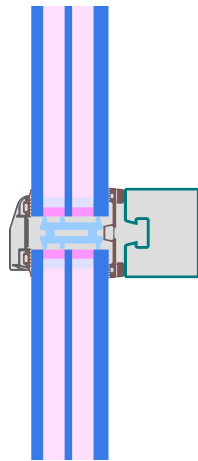
phA

cool, temperate climate

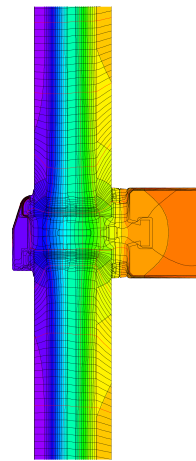


**CERTIFIED
COMPONENT**

Passive House Institute



Calculation model



Isothermal

Description

Steel glazed roof with PE isolator (0,038 W/(mK)); aluminium pressure plate and exterior capping. Plastic glass carrier on stainless steel bolts. Thermally insulated screws. Losses by screws and glass carrier were determined by 3d-thermal flux analysis (PHI). Glazing: 10/14/5/14/8 mm, with one pane of laminated safety glass to the interior. Edge bond: SWISSPACER Ultimate with polysulfide secondary seal.

Explanation






The element U-values were calculated for the test element size of 1.20 m × 2.50 m with $U_g = 0.80 \text{ W}/(\text{m}^2 \text{ K})$. If a higher quality glazing is used, the element U-values will improve as follows:

Glazing	$U_g =$	0.80	0.70	0.58	0.53	W/(m ² K)
		↓	↓	↓	↓	
Element	$U_{CW,i}$	0.93	0.83	0.72	0.68	W/(m ² K)

Transparent building components are sorted into efficiency classes depending on the heat losses through the opaque part. The frame U-Values, frame widths, thermal bridges at the glazing edge and the glazing edge lengths are included in these heat losses. A more detailed report of the calculations performed in the context of certification is available from the manufacturer.

The Passive House Institute has defined international component criteria for seven climate zones. In principle, components that have been certified for climate zones with higher thermal requirements may also be used in climates with less stringent requirements. In a particular climate zone it may make sense to use a component of a higher thermal quality which has been certified for a climate zone with more stringent requirements.

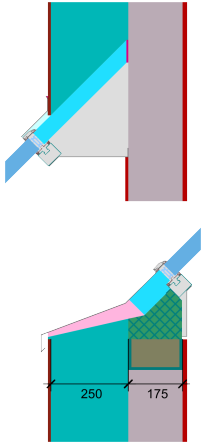
Further information relating to certification can be found on www.passivehouse.com and passipedia.org.

Frame values			Frame width b_f mm	U -value frame U_f W/(m ² K)	Ψ -glazing edge Ψ_g W/(m K)	Temp. Factor $f_{RSI=0.25}$ [-]
Mullion fixed	(OM1)		60	0.77	0.052	0.75
Transom fixed	(OT1)		60	0.77	0.052	0.73
Bottom fixed	(FB1)		60	0.79	0.052	0.73
Top fixed	(FH1)		60	0.79	0.052	0.73
Lateral fixed	(FJ1)		60	0.79	0.051	0.75
Spacer: SWISSPACER ULTIMATE				Secondary seal: Polysulfide		

Validated installations

Exterior insulation and finishing system (EIFS) (fixed glazed)

$U_{Wall} = 0.13 \text{ W/(m}^2 \text{ K)}$



$\Psi_{install}$	W/(m K)
Top	0.038
Left	0.059
Right	0.059
Bottom	0.059

$U_{W,installed} = 1.00 \text{ W/(m}^2 \text{ K)}$

